



Stormwater Charge

Presenter: Kevin Yaraskavitch

Date: October 31, 2016



Agenda

- Introduction to Stormwater Management
- **Why** have a stormwater charge?
- **How** would the charge be calculated?
- **What** would be the impact of the stormwater charge?

Introduction to Stormwater

What is stormwater?



Impervious Areas



Stormwater Runoff

Low Runoff



9% Impervious

**Examples: Natural Areas,
Vacant Properties, Golf
Courses**

Medium Runoff



44% Impervious

**Examples: Residential and
Institutional**

High Runoff



88% Impervious

**Examples: Commercial,
Industrial and Mixed Use**

Newmarket's Stormwater Assets

Asset Name	Estimated Quantity	Unit of Measure	Historical Cost
Real Assets			
Land	130	Acres	\$ 12,264,376
Pipe Assets			
Storm Sewers	225	Kilometers	\$ 63,919,809
Catch Basins	7,278	Number	
Stormwater Manholes	3,450	Number	
Outlets to receiving waters	355	Number	
Pond Assets			
Stormwater Management Facilities	53	Number	\$ 9,847,092
Watercourse Assets			
Watercourses, streams, rivers, and creeks	55	Kilometers	N/A

**Why have a stormwater
charge?**

The Perfect Storm



Flood Prevention



Aging Assets



**Environmental
Protection**

Aging Assets

Projected Replacement	Replacement Value	Percentage
1 - 10 Years	\$ 17,017,100	15%
11 - 20 Years	\$3,992,900	4%
21 - 30 Years	\$ -	0%
31 - 40 Years	\$ 219,300	0%
41 - 50 Years	\$ 1,670,400	1%
51 + Years	\$ 90,939,100	80%
Total	\$ 113,839,000	100%

Funding Solution



Many municipalities across Canada have established Stormwater Charges. This list includes:

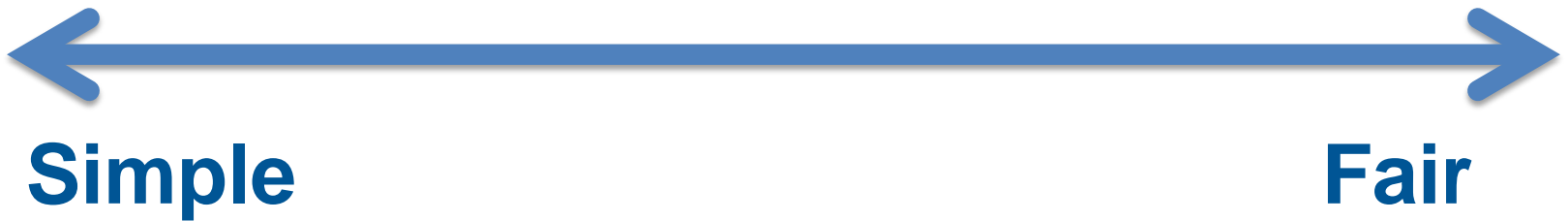
City of Regina
City of Edmonton
Strathcona County
City of Calgary
City of Langley
City of Surrey
City of Pitt Meadows
City of Victoria
City of Prince George

City of Kitchener
City of London
City of Waterloo
City of Mississauga
City of Markham
City of Vaughan
City of Ottawa
Town of Richmond Hill
Town of Aurora

How would the charge be calculated?

Rate Principles

Stormwater Charge Spectrum



Development Intensity Model



Size of Property x Runoff Level Group Rate = Charge

Low runoff level group



9% Impervious

Medium runoff level group



44% Impervious

High runoff level group



88% Impervious

Public Consultation



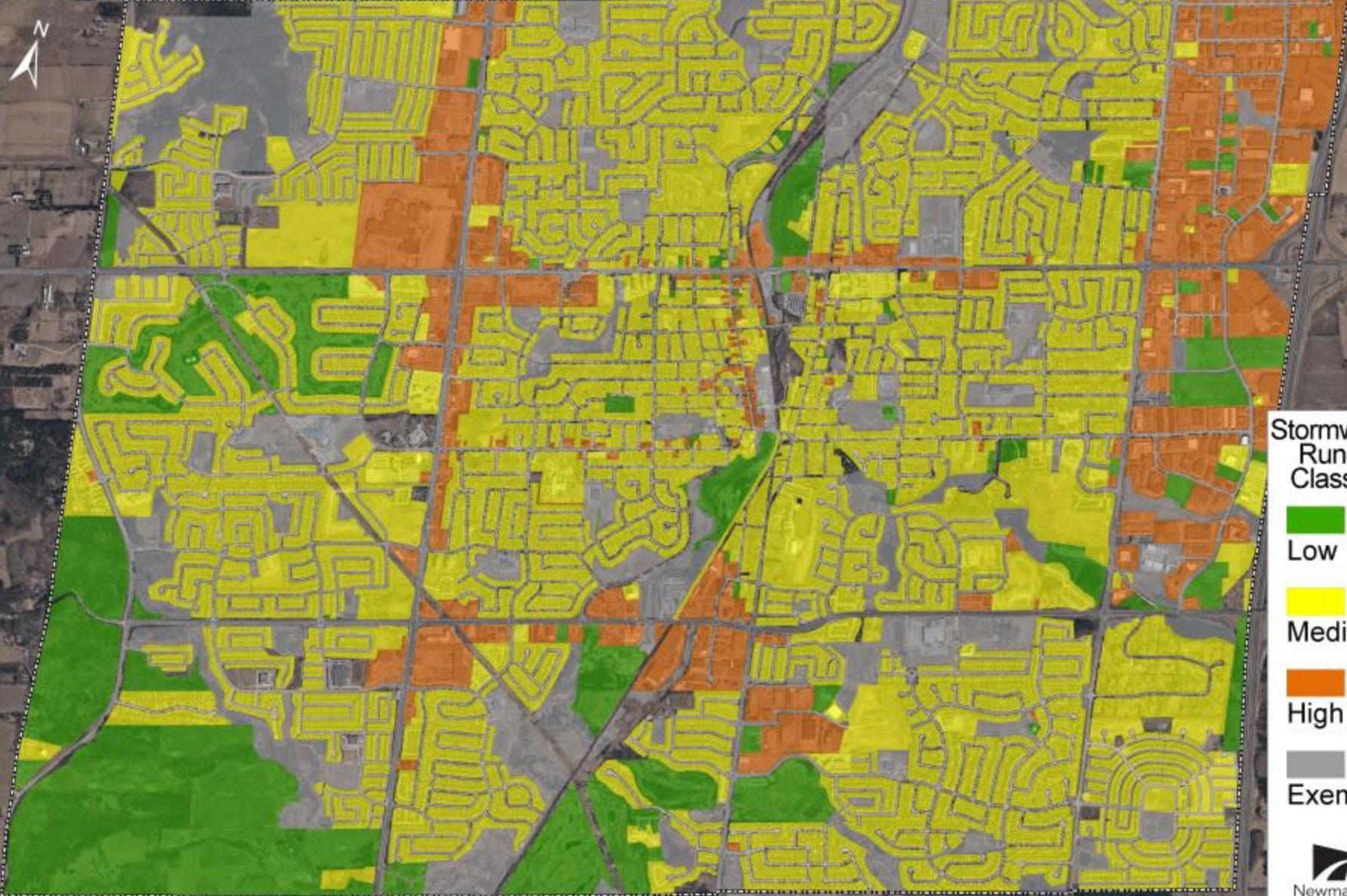
- Press Release
- Facebook Ad
- Hosted Public Information Centre
- Present at Newmarket Open House
- Newmarket Chamber of Commerce
- Newmarket Environmental Advisory Committee

Stormwater Charge Calculator

The image shows a software window titled "Stormwater" with a close button (X) in the top right corner. The window contains several input fields and buttons:

- Funding Requirement:** A text input field with a vertical cursor.
- Year:** A dropdown menu currently showing "2016".
- Imperviousness:** A section with three rows: "Low" with a value of "0.09", "Medium" with a value of "0.44", and "High" with a value of "0.88". Each row has a label and a text input field.
- Override Runoff Rate:** A section with three rows: "Low", "Medium", and "High". Each row has a label and an empty text input field.
- Buttons:** "Credits" and "Vacant Properties" are located below the runoff rate section. At the bottom right, there is a "Go" button. There are also two empty rectangular boxes at the bottom left of the window.

Town of Newmarket Stormwater Runoff Classifications



Stormwater
Runoff
Classes

Low

Medium

High

Exempt



Stormwater Charge Video

What would be the impact of the stormwater charge?

Estimated Average Stormwater Charge

	Low	Medium	High
Rate Per Square Meter	\$ 0.013	\$ 0.064	\$ 0.128
Average Size in Square Meters	14,200	600	3,720
Average Annual Fee	\$ 185	\$ 38	\$ 475

Impact of Implementing a Stormwater Charge

	Low	Medium	High
Total Annual Average Municipal Costs without Stormwater Charge	2,368	2,804	10,778
Total Annual Average Municipal Costs with Stormwater Charge	2,499	2,790	11,070
Change in Total Annual Average Municipal Costs (\$)	\$131	-\$14	\$236
Change in Total Annual Average Municipal Costs (%)	5.55%	-0.51%	2.19%

Credit Program



Residential

Negative benefit for the rate payer and the utility at this time



Industrial and Commercial

Positive benefit for the rate payer and the utility