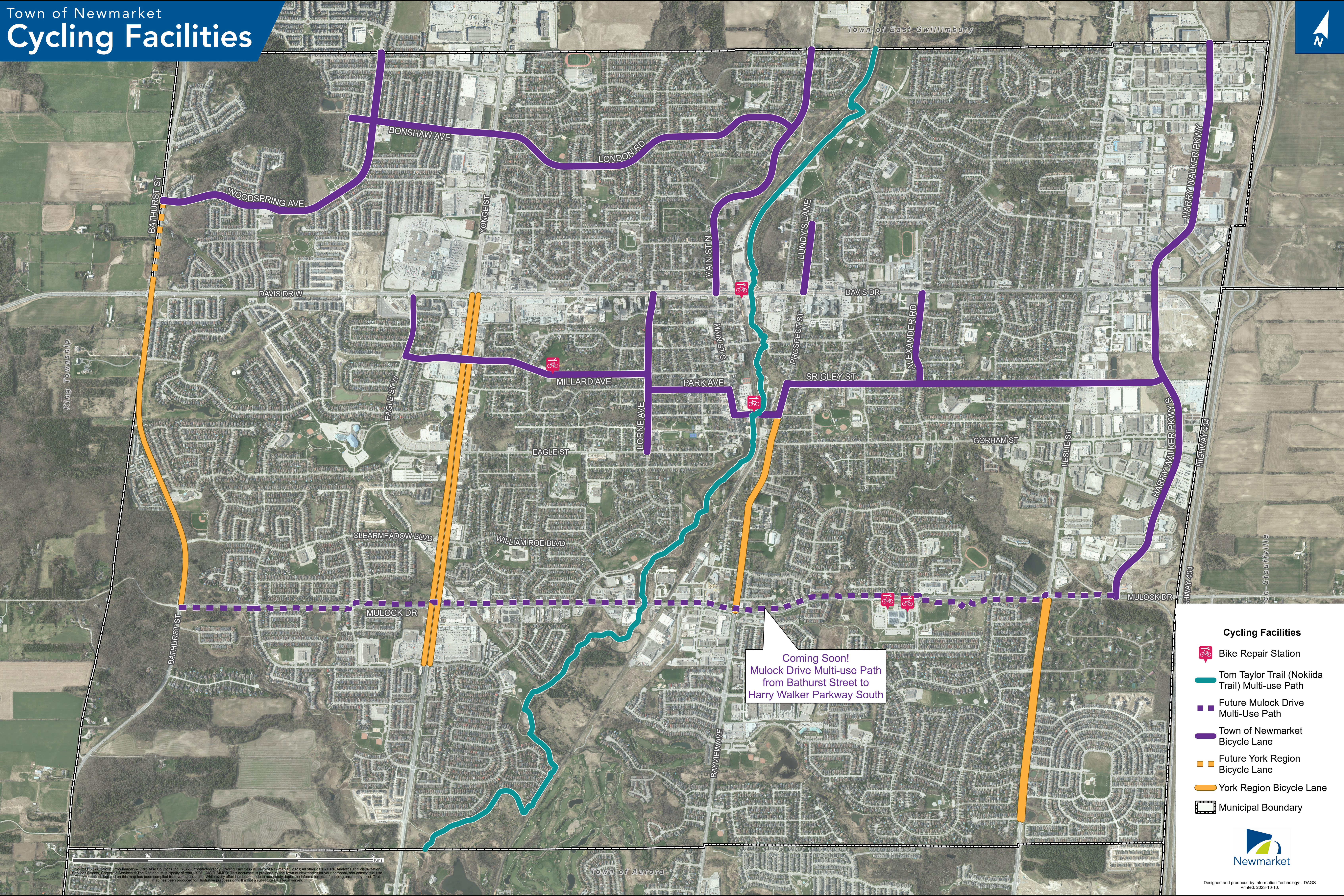









Town of Newmarket Cycling Facilities



Coming Soon!
Mulock Drive Multi-use Path
from Bathurst Street to
Harry Walker Parkway South

Cycling Facilities

-  Bike Repair Station
-  Tom Taylor Trail (Nokiida Trail) Multi-use Path
-  Future Mulock Drive Multi-Use Path
-  Town of Newmarket Bicycle Lane
-  Future York Region Bicycle Lane
-  York Region Bicycle Lane
-  Municipal Boundary



Researched: 2023-10-10. Imagery: First Base Solutions Inc. 2022. Orthophotography: Cycling Facilities. © Town of Newmarket, 2023. All other data: Data, Analytics and Visualization Services Branch. Copyright Services © The Regional Municipality of York, 2023. DISCLAIMER: This document is provided by the Town of Newmarket for your personal, non-commercial use. The information displayed on this map has been derived from various sources. While every effort has been made to ensure the accuracy of the information, data, mapping errors may exist. This map has been produced for illustrative purposes only. It is not a substitute for a legal survey.