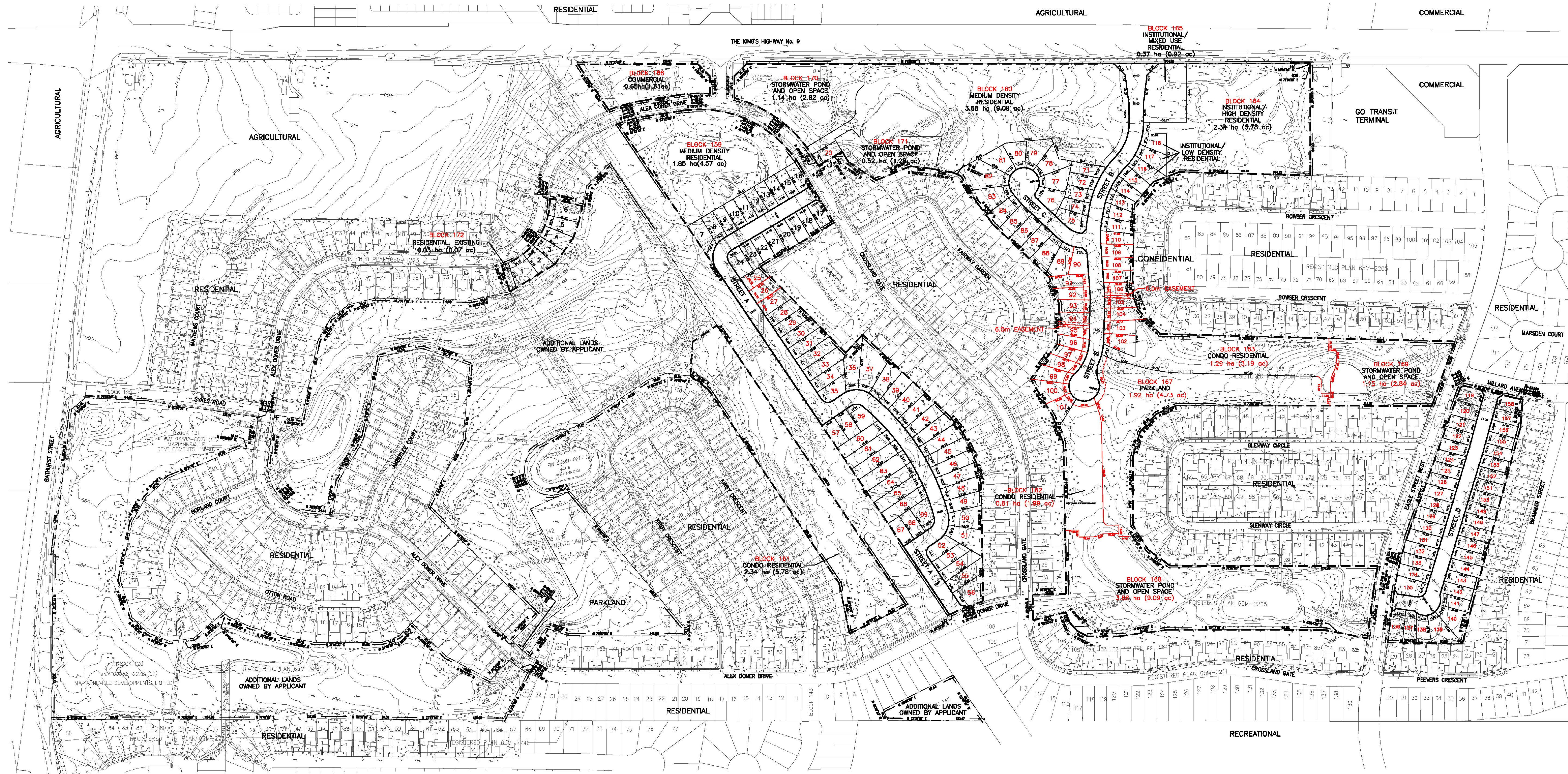


CONFIDENTIAL & WITHOUT PREJUDICE



KEY PLAN



DRAFT PLAN OF SUBDIVISION

OF PART OF
LOTS 60, 61, 64, 65, 66, 67
BLOCK 92, RP 65M-2212
 AND ALL OF
BLOCK 91, RP 65M-2212
BLOCK 155, RP 65M-2205
BLOCKS 144, RP 65M-2261
BLOCK 89, RP 65M-2263
BLOCK 73, RP 65M-2284
 TOWN OF NEWMARKET
 REGIONAL MUNICIPALITY OF YORK

INFORMATION REQUIRED UNDER SECTION 51 (17) OF THE PLANNING ACT

- | | |
|--------------------|---|
| A) As shown | G) As shown |
| B) As shown | H) Municipal water supply available |
| C) As shown | I) Mix of Silty Sand & Silty Clay |
| D) As listed above | J) As shown |
| E) As shown | K) All municipal services to be available |
| F) As shown | L) As shown |

PROPOSED LAND USES AND AREAS

RESIDENTIAL (LOTS 1-115, 119-159)	159 units	11,139 ha
INSTITUTIONAL/RESIDENTIAL (LOTS 116-118)	3 units	0,220 ha
RESIDENTIAL, MEDIUM DENSITY (BLOCKS 159-160)	223 units	6,532 ha
RESIDENTIAL CONDOS (BLOCKS 161-163)	51 units	4,433 ha
INSTITUTIONAL/RESIDENTIAL, HIGH DENSITY (BLOCK 164)	298 units	2,337 ha
INSTITUTIONAL/MIXED USE (BLOCK 165)	12 units	0,373 ha
COMMERCIAL (BLOCK 166)	1 unit	0,646 ha
PARKLAND (BLOCKS 167)	1 unit	1,916 ha
STORMWATER MANAGEMENT & OPEN SPACE (BLOCKS 168-171)	1 unit	6,483 ha
RESIDENTIAL, EXISTING (BLOCK 172)	1 unit	0,093 ha
PROPOSED ROADS	1 unit	3,178 ha
TOTAL	742 units	38,298 ha

OWNER'S CERTIFICATE

MARIANNEVILLE DEVELOPMENTS LIMITED
 HEREBY CONSENTS TO THE FILING OF THIS PLAN IN DRAFT FORM

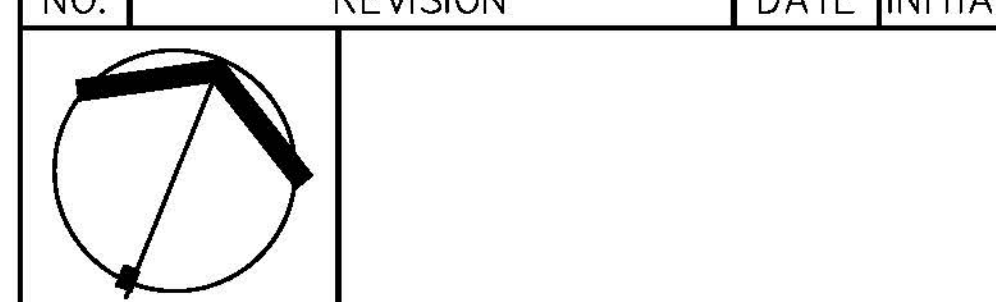
MARIANNEVILLE DEVELOPMENTS LTD., OWNER _____ DATED _____

SURVEYOR'S CERTIFICATE

I HEREBY CERTIFY THAT THE BOUNDARIES OF THE LAND TO BE SUBDIVIDED AND THEIR RELATIONSHIP TO THE ADJACENT LANDS ARE ACCURATELY SHOWN ON THIS PLAN.

Greg G. Robinson, ONTARIO LAND SURVEYOR _____ DATED _____
 for J.D. BARNES LTD.

5	Revise Easement Align (+1 lot)	Apr 3	CK
4	Revised for submission to Town	Mar 20	CK
3	Revised for submission to Town	Nov 15	CK
2	Parkland Dedication Revisions	Nov 7	CK
1	Revised for OMB Prehearing	Aug 6	CK
NO.	REVISION	DATE	INITIAL



318 Wellington Road, London, Ontario N6C 4P4
 Tel: (519) 474-7137 Fax: (519) 474-2284 e-mail: zp@zpln.com

DRAWN BY	PROJECT NO.
CK	MVL/NMK/10-01
DATE	SCALE
APRIL 2014	1:2,000